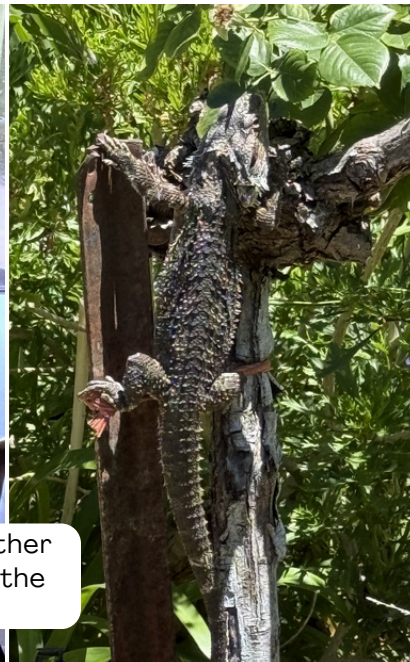


December 2025

# Cypress View News

"The best way to spread Christmas cheer is singing loud for all to hear" Will Ferrell, ELF



## ANNOUNCEMENTS

**Dr Kofi** will be closed from **24th Dec to 12th Jan** for a Christmas Break

**Summer Warning**  
Please remember there are **SNAKES** about. Please keep your external sliding doors closed.



## WHAT'S HAPPENING IN THE COMMUNITY

GALA Night  
Saturday 13<sup>th</sup>  
December

Community  
Carols Night 18<sup>th</sup>  
December

## Merry Christmas and Happy New Year

On behalf of all the staff at Cypress View Lodge, we would like to wish you a very Merry Christmas and a Happy New Year! This season, we are reminded of the joy, love, and kindness that make our community so special. Thank you for your trust and support throughout the year. We look forward to continuing to care for and support you in the year ahead. May your holidays be filled with warmth, peace, and cherished moments with those you hold dear.



## Christmas Shop

Are you looking for small gifts for family members? Small range of gifts for sale. Toys, Chocolates, Lollies, giftware.

All items \$8 each.  
Friday 12<sup>th</sup> December at afternoon tea



## Birthdays & Milestones

**December**  
7<sup>th</sup> Mary Gilbert  
16<sup>th</sup> Gwen Chant

# Get to know our new pharmacist - Ross

Where are you originally from?

**Newcastle.**

How long have you been a Pharmacist?

**34 years.**

How many kids do you have?

**6 kids.**

What are you enjoying about Coleambally so far?

**Meeting all the people.**

Fun facts about yourself?

**I am a big cricket fan and will be joining the VRA in Coleambally.**



## Feel good about your age

These are not grey hairs!



They are wisdom highlights.

I've decided: Whatever age I am is the new 30.



Don't let ageing get you down; it's too hard to get back up again.



Some of the harvest from our vegie garden

Brian performing with the Ukele group



Fun activity - making shoe planters

## Important Dates

**What:** Hairdresser

**When:** 15<sup>th</sup> December

Remember to book in with Jenna 0406141557

**What:** Christmas Party

**When:** 18<sup>th</sup> December

**Where:** Activities Room

**What:** Consumer Advisory Meeting

**When:** 7th January

**Where:** Activities Room

**What:** Church Service

**When:** 21<sup>st</sup> December

**Where:** Activities Room

## WE WELCOME YOUR FEEDBACK



We are always striving to improve and welcome your comments, complaints and suggestions. Feedback forms are available at the office and Activities room. You can also scan the QR code to complete online or email direct to [karenh@cypressviewlodge.com.au](mailto:karenh@cypressviewlodge.com.au).

## Care Minutes

Mins/ resident/day	Target	Nov2025
Registered Nurse	38.9	36.6
Total Care	185.3	203.3

CVL has an exemption from the 24/7 RN requirement and has in extensive alternative care arrangements in place to ensure all residents receive care by appropriate staff.



PO Box 27, Coleambally 2707



02 6954 4202



[admin@cypressviewlodge.com.au](mailto:admin@cypressviewlodge.com.au)